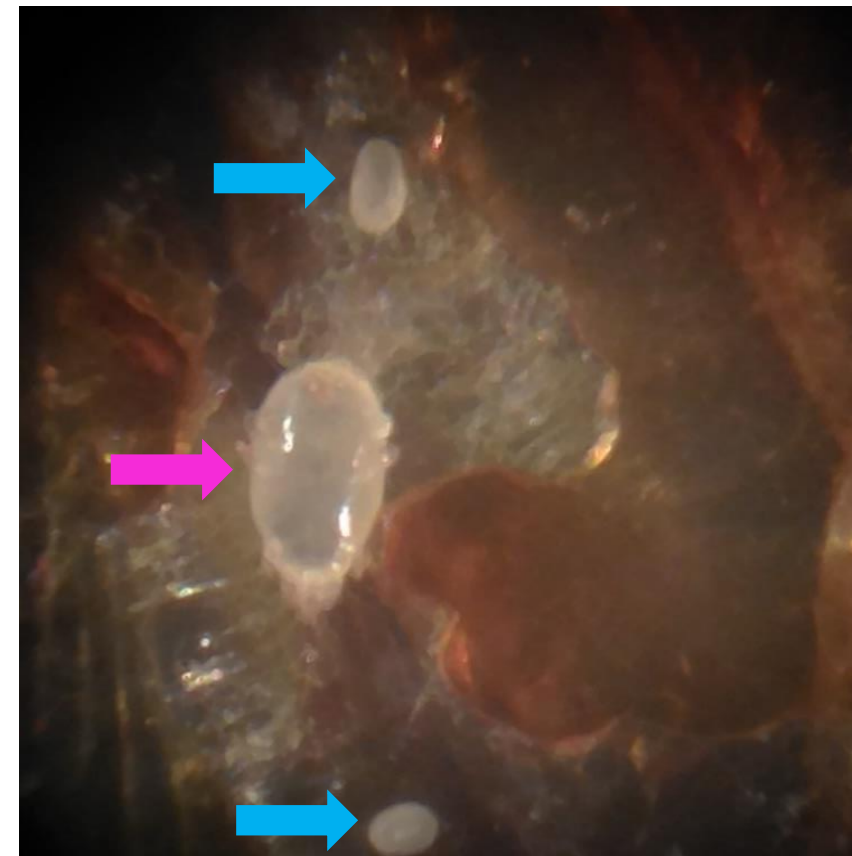
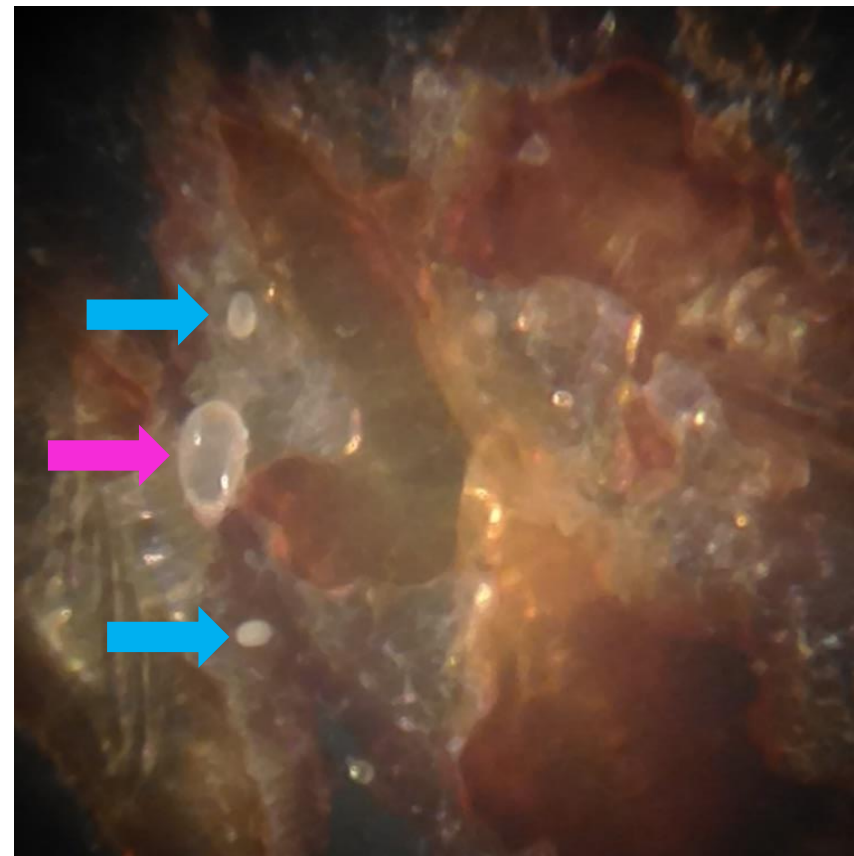
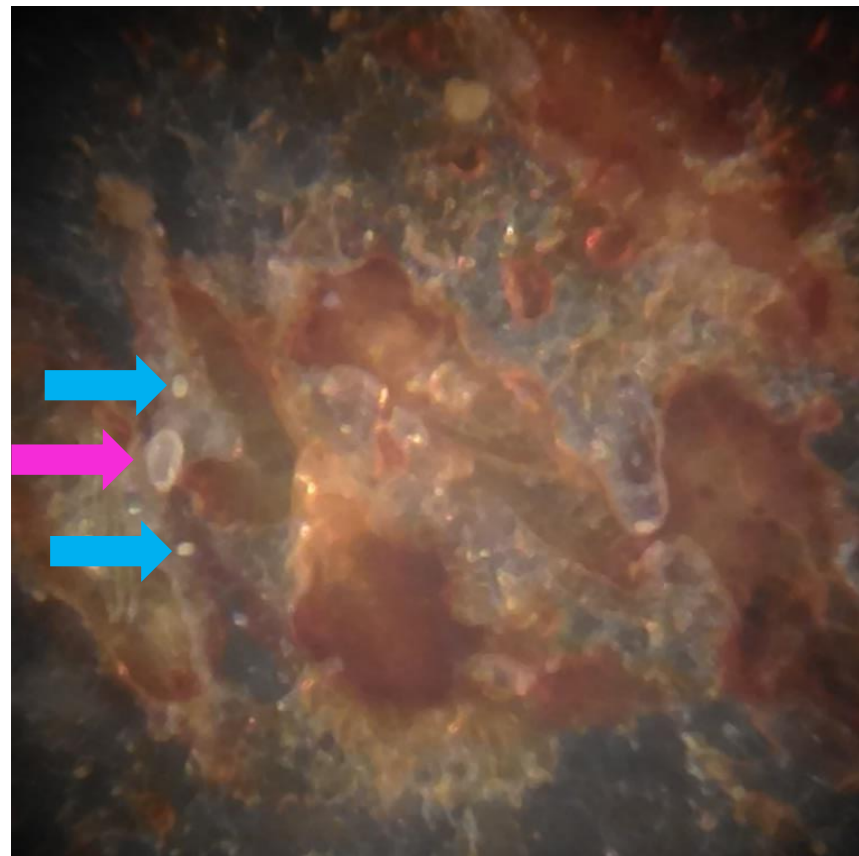


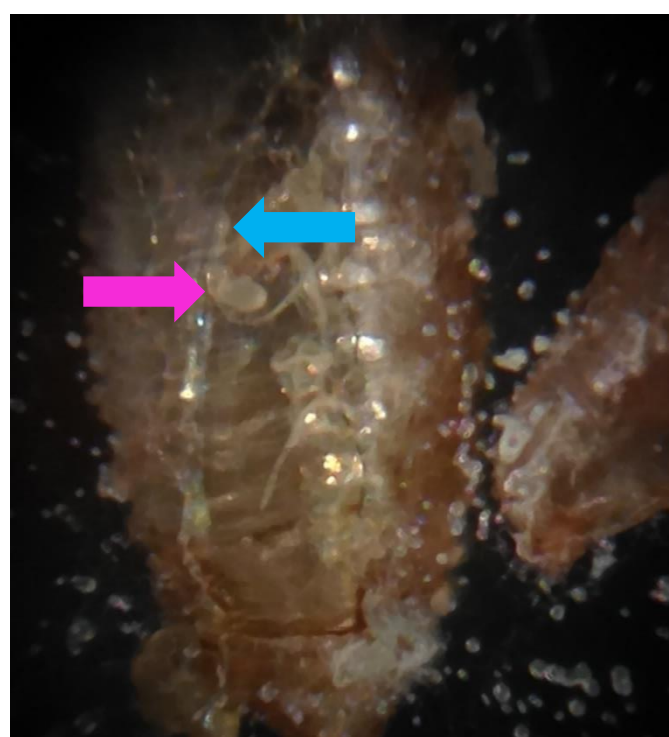
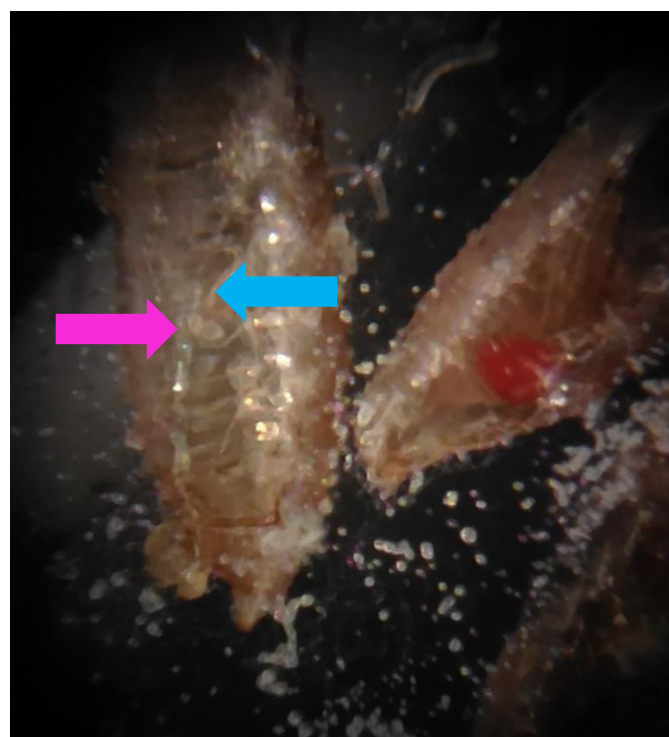
MITES

The images below are of common dust mites in fly cultures.

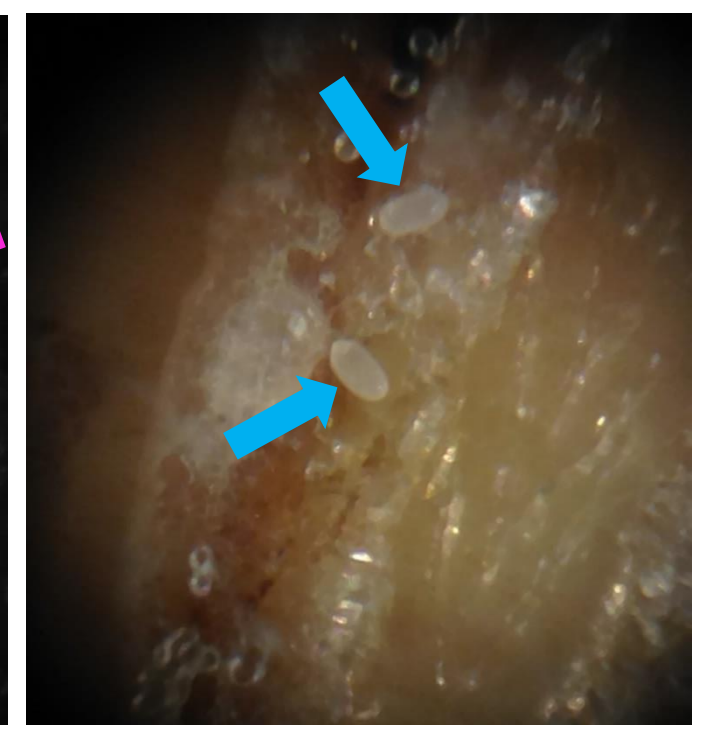
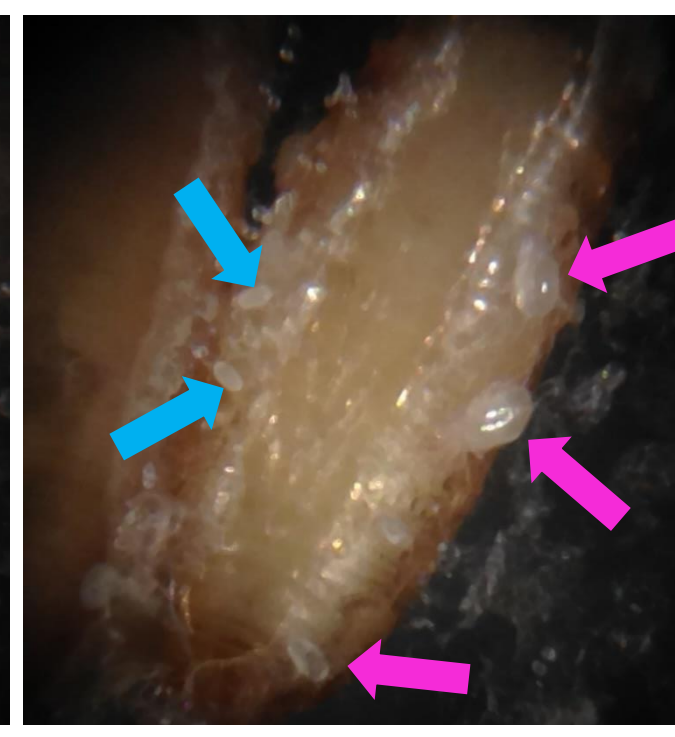
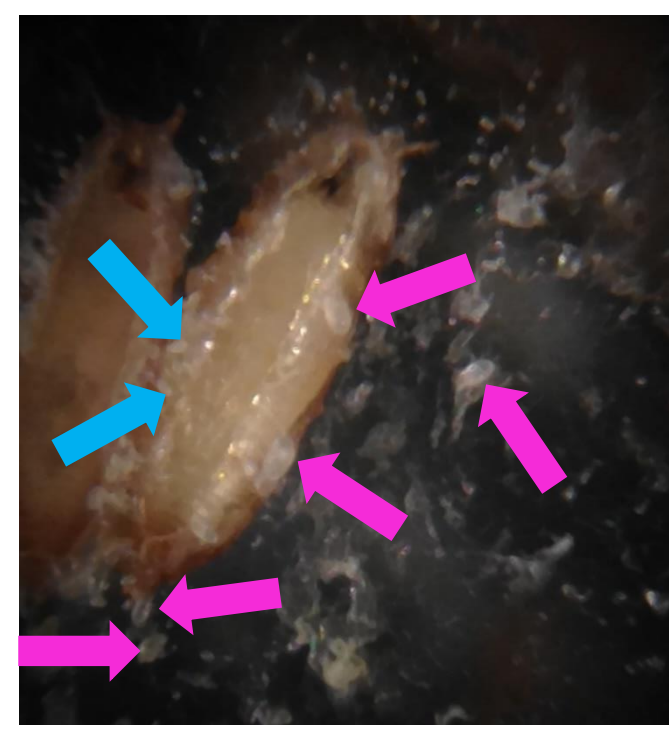
An image of a mite and mite eggs with increasing magnification moving from left to right.



2nd image of a mite and mite eggs with increasing magnification moving from left to right.



3rd image of a mite and mite eggs with increasing magnification moving from left to right.



Blue arrows point to mite eggs (they resemble extremely small white jelly beans).

Pink arrows point to mites, as you can see they can grow to be quite big.